

Crystal LTD TM SPEC Form

www.crystalltherm.com

Customer

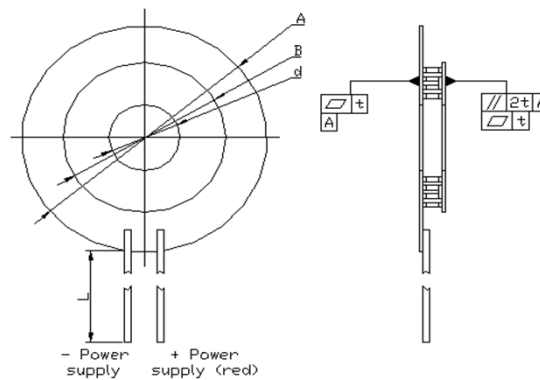
PO#

PO date

Thermoelectric module (TM) specification

PO position #	TM	Internal Solder Melting Temp, C	Max operating temperature, °C		Hot side temperature 25 °C				Rac at 25 °C		Ceramic size, mm		TM Height		Wire			Sealing
			short time	long time	Imax, A	Umax, V	Qmax, W	dTmax, K	Rac, Ohm	Tolerance ±, %	A/B	d	Height, mm	Tolerance t, ± mm	S, AWG #	Length, mm	Tolerance ±, mm	
															24	100	5	
1	S-038-10-13-RH-L2	138	130	115	3.4	4.8	10.3	74.5	1.06	10	24/24	10	3.60	0.02	24	100	5	
															PVC			

Clamping force: 4.6 - 9.2 kg



www.crystalltherm.com

Max dT is reduced by 2-3K for silicon sealed and 1-2K for epoxy sealed versions.



U(dT) at $T_{hot}=298K$

