

Crystal LTD TM SPEC Form www.crystaltherm.com

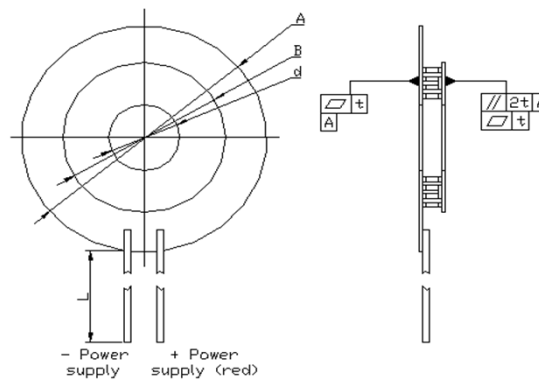
Customer

PO#
PO date

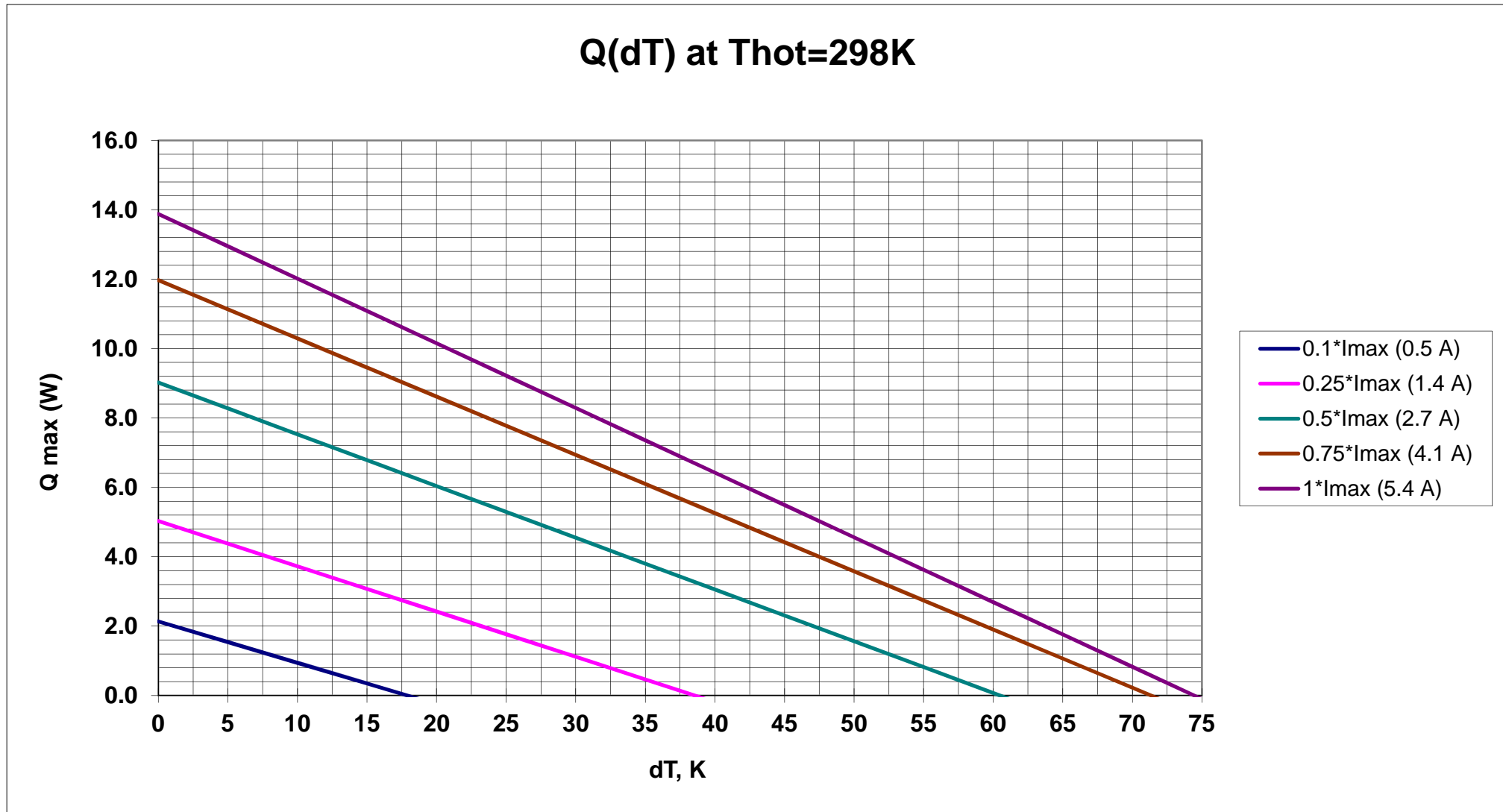
Thermoelectric module (TM) specification

PO position #	TM	Internal Solder Melting Temp, C	Max operating temperature, °C		Parameters in vacuum at hot side temperature 25 °C				Rac at 25 °C		Ceramic size, mm		TM Height		Wire			Sealing
			short time	continuous operation	I _{max} , A	U _{max} , V	Q _{max} , W	dT _{max} , K	Rac, Ohm	Tolerance ±, %	A/B	d	Height, mm	Tolerance t, ± mm	S, AWG #	Length, mm	Tolerance ±, mm	
1	S-032-14-15-RH-L2	138	130	115	5.4	4.1	13.9	74.5	0.56	10	55/44	27	3.90	0.02	22	100	5	
															PVC			

Clamping force: 7.6 - 15.1 kg



Max dT is reduced by 2-3K for silicon sealed and 1-2K for epoxy sealed versions.



U(dT) at $T_{hot}=298K$

